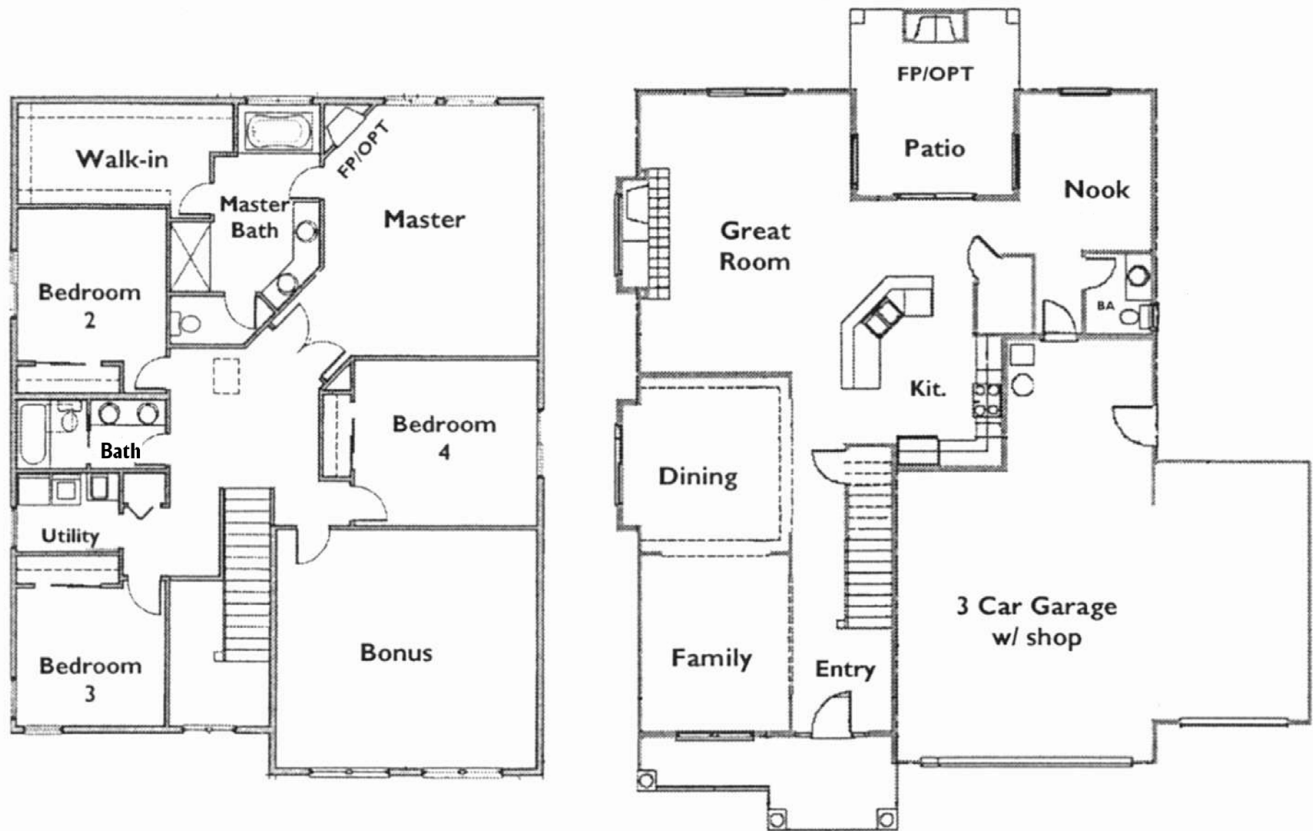


# The Laurelhurst



Elevation A



**pc Bank**  
HOME LOANS  
A Division of Pierce Commercial Bank  
Shawn Portmann 253.208.7817



**John L. Scott**  
REAL ESTATE

**NewHomes**for you.com

For more information, please contact:  
**Doug Walker (253) 370-1690**



All prices, plans and specifications are subject to change without notice.