

NOTHING but the **BEST**

## The Newport B

### Home Plan Details

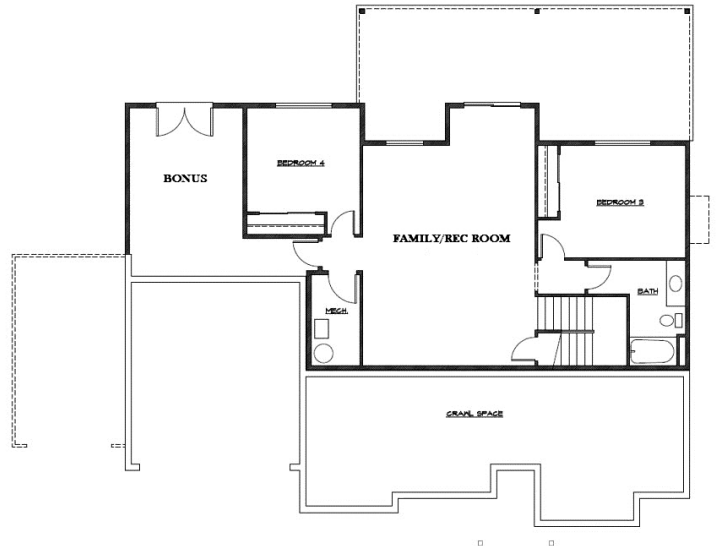
Total Living Size: 3,114 sf.

Style: Rambler w/ Daylight Basement

Beds / Baths: 4 / 3

Garage: 3 Car

Features: Main Level Den, Covered Deck in the Back, Master Suite on Main, Lower Level Bonus



NewHomesforyou.com

John L. Scott  
REAL ESTATE



For more information, please contact:  
**Doug Walker (253) 370-1690**

All prices, plans and specifications are subject to change without notice.