

Citi-Life

LLC

The Citi

Live in the heart of a city that has recently been named on three "top 50 lists"...Top 50 Best Places to Live; Kiplinger's 50 Smart Places to Live; and 50 Fabulous Places to Raise Your Family.

Discover the heart of the city and immerse yourself in a community that offers diversity in the arts, business, education, commerce and recreation.

Stay connected with the free Dash Shuttle that runs between downtown and the Capital Campus. Stay fit and take advantage of the bike lanes on 70% of Olympia's arterial streets; and play in over 27 parks with miles of walkways that beautify the area.



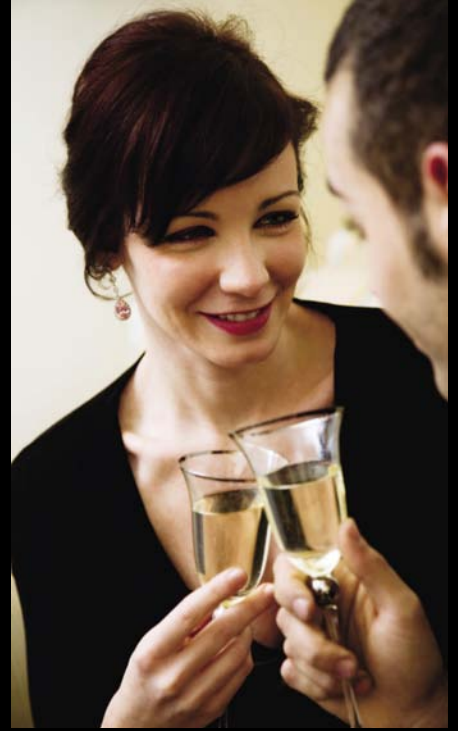
Citi-Life condominiums boast stunning lodge style exteriors surrounded by beautifully landscaped grounds.

Choose from our spacious floor plans featuring two bedrooms or one bedroom plus a den.

These stylishly appointed residences include a full appliance package and impressive features with high-end elegance.

Step in to the comfort of Citi-Life...

*Plans and Specifications subject to change without notice.



The Life



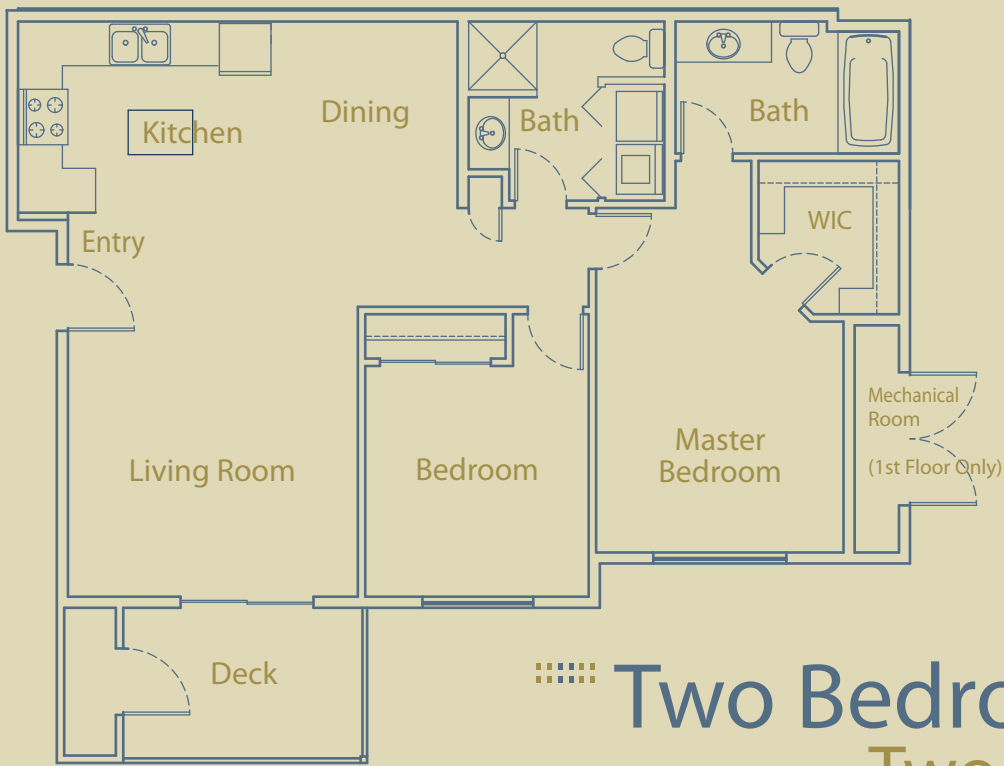


Citi-Life

Features and Amenities

- ... Hardi-plank siding with shaker accents
- ... Accent iron railings on decks
- ... Covered parking
- ... Ceramic tile floors in entry and kitchen
- ... Wall-to-wall carpeting
- ... White painted millwork with white 6-panel interior doors
- ... Ceramic tile countertops in kitchen with full tile backsplash
- ... Stainless appliances (range, dishwasher, microwave and refrigerator)
- ... Full size washer and dryer
- ... Ceramic tile countertops in master and main bath with tile backsplash
- ... Stylish plumbing fixtures
- ... Cabinets with recessed panel doors and European hinges
- ... Vaulted ceilings in kitchen, family room and entry on top floor homes

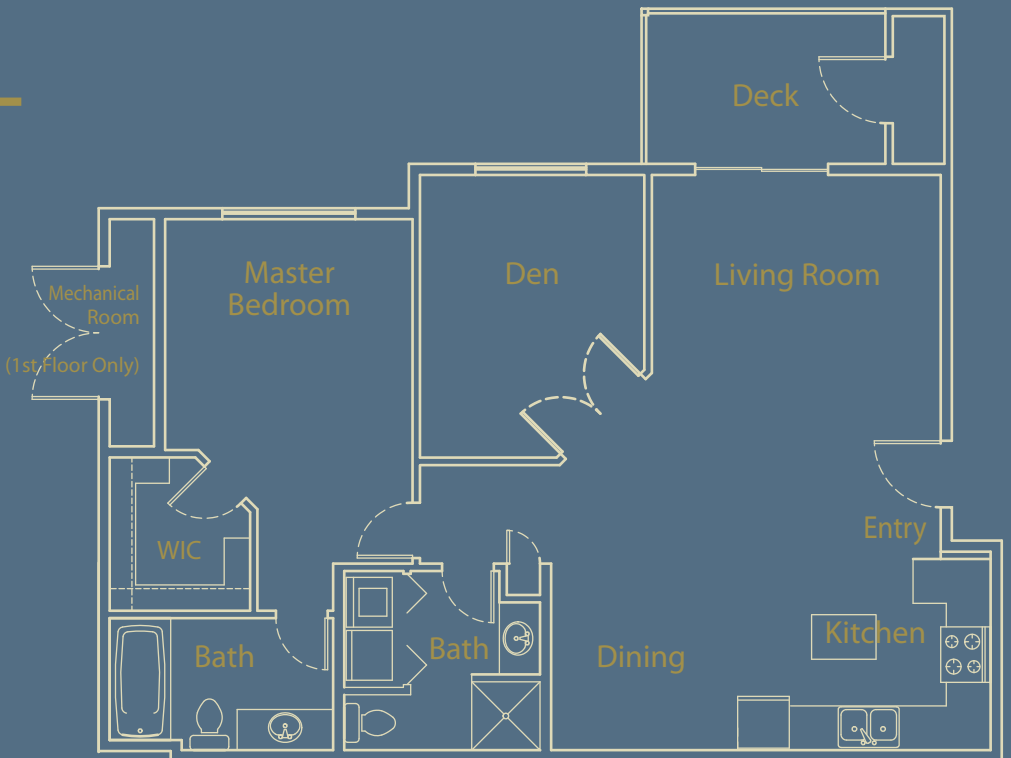




Two Bedroom
Two Bath
Approx. 1020 Square Feet

The Floorplans

One Bedroom + Den
Two Bath
Approx. 1020 Square Feet





1405 Evergreen Park Drive SW | Olympia WA | 98502

From I-5 North or South merge onto US-101 North via exit #104. Take the Cooper Pt. Road exit. Take a right on Cooper Pt. Rd SW. Take a right onto Evergreen Park Dr. SW. End at 1405 Evergreen Park Dr. SW.

NewHomes *for you*.com

Doug Walker
360.556.8166

Carl Shaw
253.686.1707

pc Bank
HOME LOANS
A Division of Pierce Commercial Bank
Shawn Portmann 253-208-7817

John L. Scott
REAL ESTATE